

M&B Systems Power Test Equipment

M&B Systems hardware for On - Line PD monitoring



**16 channel multiplexer
Type**

Multiplexer

The units designed to be used in conjunction with the Digital PD instruments Types HVS1000-2000 PDD/T The multiplexer is operated from the Digital PD unit using the PD gold software supplied . In this way up to 16 channels of data can be monitored using the Digital PD instruments

The unit is designed to monitor 16 channels of partial discharge activity of high voltage insulation on 50/60Hz power systems.

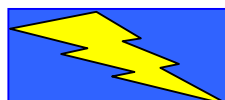
The unit is connected to the Digital PD unit via a USB link which selects the required channels. PD signals are then directed from one of the 16 channels to the digital discharge detector.

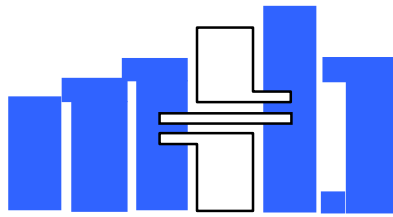
PD Gold Monitor Software

The PD Gold monitor software gives control over the monitor , displays the real- time data and allows the historical data to be displayed and analysed. Please ask for leaflet HVS PDG1 2000-02-09 which gives further details

M&B Systems also manufacture a range of Specialised test equipment for both on-line and off-line testing of electrical plant . For further information on these products please contact our sales office

Advanced Technology for Industry



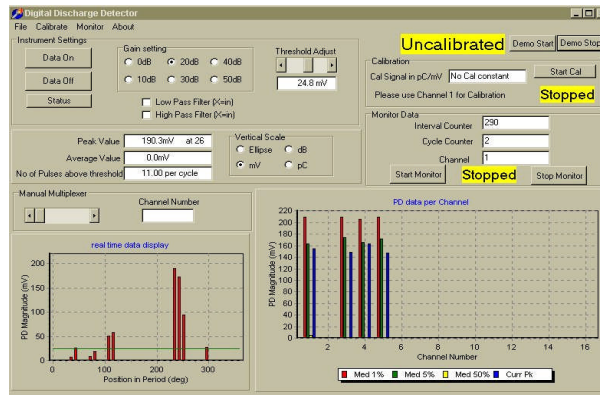


PD GOLD monitor software for use with Digital Partial Discharge detectors Type HVS 1000-2000 PDD/T

The PD GOLD monitor software is the heart of the monitoring system. It gives control over the monitor and multiplexer, displays the real-time data and allows the historical data to be displayed and analysed.

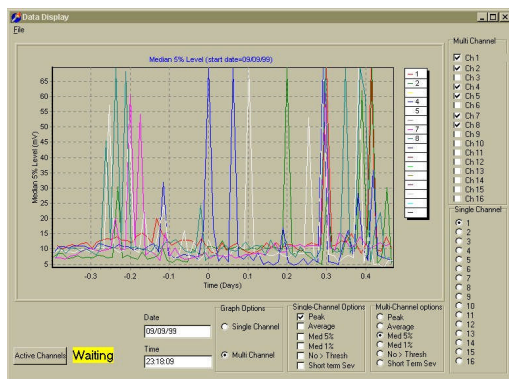
Main Monitor window

This window allows control of the monitoring tasks. In addition the software takes care of real-time display of the current channel and data, a resume of the historical data for each connected channel and a display of all the monitoring parameters. PD calibration is included as standard in this software.



The main features of the software are as follows:-

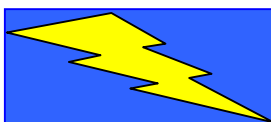
- Control of digital discharge detector and 16 channel multiplexer during monitoring process
- Real time display of the current data, and historical data for each connected channel
- Storage of user supplied data for location, channels, staff etc
- Calibration facilities to allow measurements in pC (pico Coulombs)
- Indicators of the current state of the digital discharge detector, and multiplexer
- User settable monitoring time
- Data storage file for full monitor data, and separate file for small 'summary' data file. This can be used to access status remotely without the need for transfer of large data files.
- Data analysis and display window to view all 16 channels of data simultaneously



Monitor Analysis window

All the data from all the channels can be viewed separately or together as required. Peak values, average values, number of pulses above threshold, and many other PD parameters can be displayed using this analysis window.

Advanced Technology for Industry



M&B Systems Power Instrumentation Ltd
MANCHESTER ENGLAND
 Tel: +44 (0) 161 2484090
 Fax: +44 (0) 161 2484099
 E-mail: ab.bryan-m.b@fsbdial.co.uk